



GAT MONTHLY MEMBERSHIP PROGRESS REPORT

Results as of: 5/31/2023

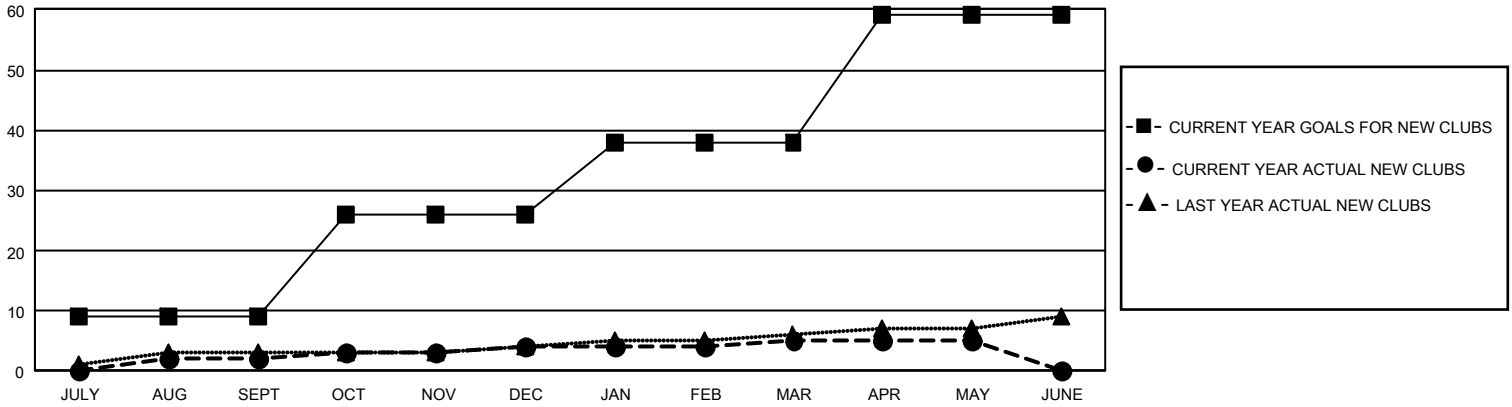
GMT Constitutional Area 1, Group A

REPORT DOES NOT INCLUDE CLUBS IN UNDISTRICTED AREAS.

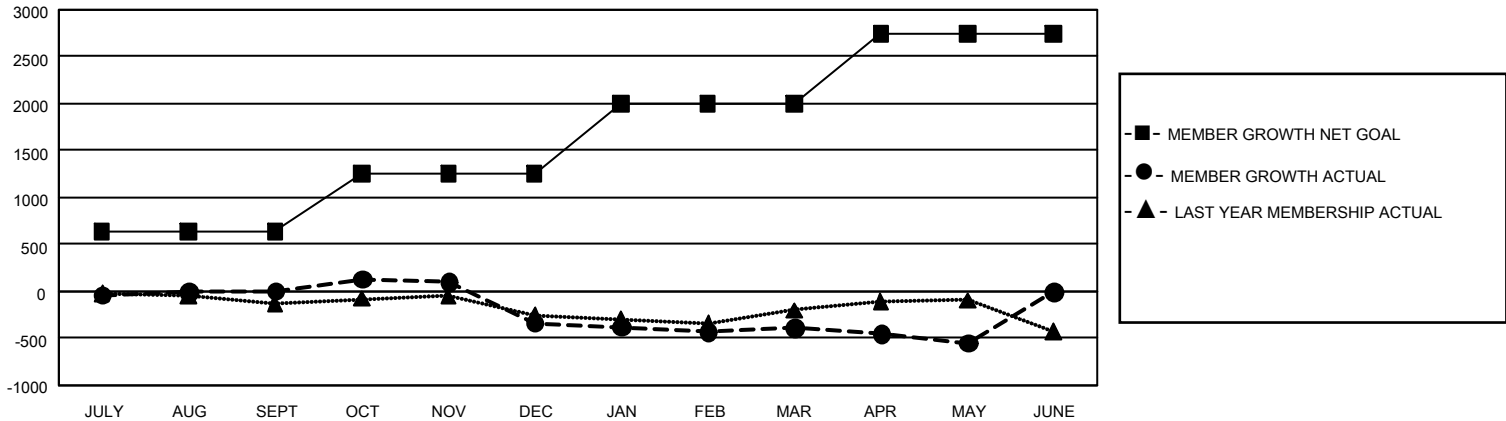
Clubs			
RESULTS FOR 2022-2023			
QUARTER	NEW CLUB GOAL	NEW CLUBS	DROPPED CLUBS
JULY/AUG/SEPT	27	2	8
OCT/NOV/DEC	51	2	12
JAN/FEB/MAR	36	1	3
APR/MAY/JUNE	63	0	2

Members			
RESULTS FOR 2022-2023			
QUARTER	MEMBER GROWTH NET GOAL	MEMBER GROWTH ACTUAL	DROPPED MEMBERS ACTUAL (including transfers)
JULY/AUG/SEPT	634	1,139	983
OCT/NOV/DEC	621	885	1,154
JAN/FEB/MAR	747	853	810
APR/MAY/JUNE	744	610	723

GOALS AND ACTUAL NEW CLUBS CUMULATIVE



GOALS AND ACTUAL MEMBERS CUMULATIVE



DROPPED CLUBS: 25	627 CLUBS OF 1,050 ADDED 1 OR MORE NEW MEMBERS	<u>GENDER DISTRIBUTION</u>	
		MALE	17,737 (61.99%)
<u>DROPPED MEMBERS</u>		FEMALE	10,864 (37.97%)
		NON BINARY	2 (0.01%)
DECEASED	352	PREFER NOT TO ANSWER	11 (0.04%)
CLUB CANCELLED	184	TOTAL FAMILY UNIT MEMBERS	4,520
OTHER	3,134	FAMILY MEMBERS PAYING HALF DUES	2,315
TOTAL	3,670	CLICK HERE FOR CUMULATIVE MEMBERSHIP DATA	